

Now Open: The Oak Pavilion at MarinHealth Medical Center

September 2020



Welcome to Your New Healing Place

Congratulations to the entire North Bay! You now have the patient-focused, technologically advanced, architecturally stunning new hospital you deserve. MarinHealth™ Medical Center's new Oak Pavilion is open and ready to care for patients and features state-of-the-art facilities and services.

MarinHealth Medical Center, formerly known as Marin General Hospital, has been the backbone of healthcare in Marin since we first opened our doors in 1952. As a district hospital owned by Marin Healthcare District, we answer only to the community we serve.

And it's been an honor for the past 68 years to respond to the ever changing healthcare needs. When the state enacted SB 1953 requiring all California hospitals to meet sweeping new earthquake-compliance standards by 2030, we took action and developed plans to build a leading-edge new hospital for the North Bay.

We spent months assessing local needs; consulting with medical experts, hospital administrators, and community leaders; and learning from best practices in the nation's most advanced hospitals. We raised millions of dollars through a general obligation bond, loans, and incredibly generous donors. Then, we assembled a stellar team of architects, designers, engineers, builders, and subcontractors and went to work. As of today, two of our projects have been completed:

1. A new staff parking structure, completed in 2016.
2. A four-story, 260,000-square-foot hospital replacement building, our new Oak Pavilion.

Over the next few years, improvements to MarinHealth Medical Center's campus will continue. Plans for a new main entrance and five-story, 100,000-square-foot medical office building are underway.

Patient-centric, Future-focused

Oak Pavilion is the newest, safest, most modern hospital building in the state of California, and it provides a unique environment that enables our medical teams to do their best work and improve patient outcomes. Our new facilities ensure that residents of the North Bay can count on MarinHealth for expert care, now and in the decades to come.



Features at a Glance

5 levels, 260,000 square feet

114 private patient rooms

3x larger Emergency Department & Trauma Center

Luxurious Maternity Care

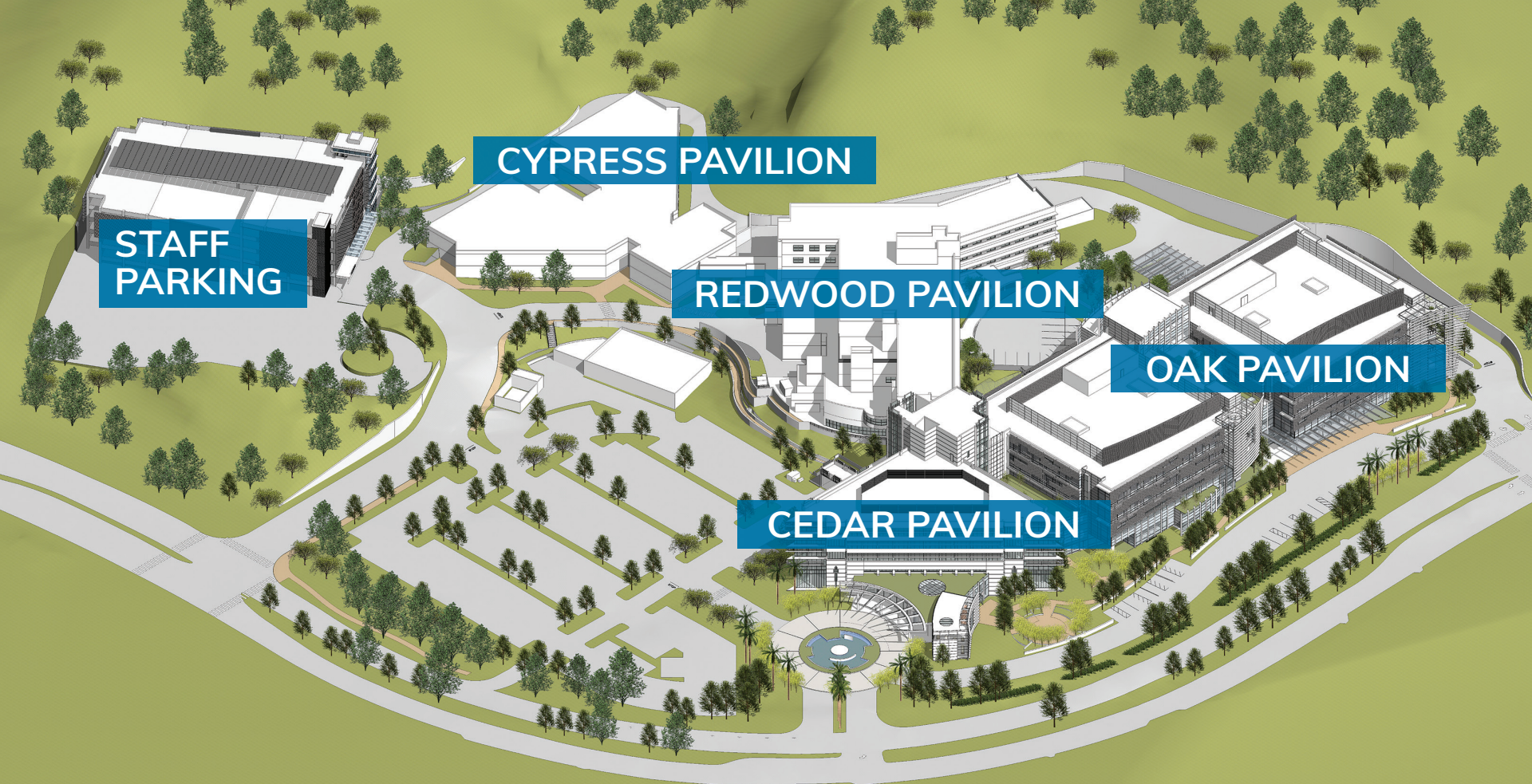
- > 15 labor, delivery, recovery, and postpartum (LDRP) rooms
- > 7-bed neonatal intensive care unit (NICU)

New Surgical & Procedural Areas

- > 3 dual-use interventional suites for electrophysiology, cardiac catheterization, and interventional radiology
- > 3 new operating rooms (to support our existing 8), including 2 equipped for robotic-assisted procedures



The ceremonial Ribbon Cutting was livestreamed Saturday, August 29, 2020.
Watch the replay at www.MarinHealthEvents.com



Building names across the campus have changed and now reflect local tree species.

Our New Hospital Is Now an Even Better Place to Get Better

As Marin’s only full-service, acute-care hospital, MarinHealth Medical Center has always been the premier resource for comprehensive care across all major medical specialties. Our Emergency Department & Trauma Center receives 70% of the county’s ambulance traffic. We provide lifesaving care for stroke and heart attack. And we have the only hospital-based labor and delivery services in Marin. Now, with the care enhancements built in to our new Oak Pavilion, we’ve taken our high standard of care up a notch.

CARE-ENHANCING IMPROVEMENTS IN THE OAK PAVILION

Emergency Department (ED) & Trauma Center

Our ED has tripled in size, with larger treatment rooms, a separate entrance and treatment area for psychiatric, and high-security patients, and a dedicated check-in and waiting area for children. The new ED has five trauma bays and 20 private patient rooms, including negative pressure and decontamination rooms to safely care for highly infectious patients.

Intensive Care Unit (ICU)

Our new ICU has 19 spacious private rooms, each with its own private bathroom.

Imaging & Radiology

Equipped with the latest technologies, Imaging & Radiology is now conveniently located adjacent to the Emergency Department and below Surgery & Procedures, so emergency care can be expedited.

Surgery & Procedures

We have added three new operating rooms, two of which can accommodate robotic-assisted procedures. Our new surgical suites are double in size to fit the latest equipment and enable advanced surgeries. We also added three dual-use interventional suites for electrophysiology, cardiac catheterization, and interventional radiology.

Maternity Care & Neonatal Intensive Care Unit (NICU)

Following best practices, our 15 new, private labor, delivery, recovery, and postpartum (LDRP) rooms, allow mothers and babies to stay in the same place throughout their experience. We have two side-by-side C-section procedure rooms for planned or emergency cesareans. Our newly expanded NICU has six private patient rooms and is staffed around-the-clock with an in-house pediatric hospitalist who specializes in neonatology. As part of our collaboration with UCSF Health, our NICU offers 24-hour access to neonatologists from UCSF Benioff Children’s Hospital.



“This is an incredibly complex project and it’s been amazing to see so many teams working with a shared sense of purpose, collaborating seamlessly on hundreds of interdependent tasks.”



Vernon Moreno
Vice President of Support Services
MarinHealth Medical Center



ED room (all are decorated with art).



Interventional radiology suite with biplane machine.



NICU room with isolette.

For floor plans and more detailed information about these programs, go to pages 4–5.

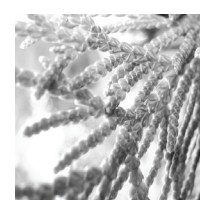
Finding Your Way Around

As a hospital with deep roots in Marin, we have tapped into the healing power of nature for our design, including plenty of outdoor greenery and windows and skylights to bring in natural light. To reflect our community’s love of the outdoors, we have renamed the buildings on our campus using names of trees indigenous to our region—oak, redwood, cypress, and cedar. To improve wayfinding, each building uses its unique leaf image on signage.

Floor levels across the campus are color coded from earth to sky. The **Lobby Level is orange**, **Level 1 is light green**, **Level 2 is green**, **Level 3 is blue**, and **Level 4 is light purple**. Visitors, patients, and staff can rely on colors and leaf images to orient themselves as they cross from one Pavilion to another.



Oak



Cypress



Redwood



Cedar



The Guiding Principles Behind the Design

Wide hallways, big windows, skylights, and open spaces contribute to the healing environment.

Designed by Perkins Eastman Architects in collaboration with physicians, staff, and patients and their families, our new hospital was planned according to four guiding principles:

1

Patient-centric Care

2

Safety and Efficiency

3

Future-friendly Scalability

4

Green, Sustainable Design

Patient-centric Care: A Hospital That Puts Patients First

Beyond traditional medicine, patient-centric care also addresses a patient's comfort and emotional well-being. Our new hospital building transforms the patient experience by treating the whole person, body, mind, and spirit, while respecting their dignity.

Following the best practices of modern hospital design, the Oak Pavilion's large, all-private patient rooms are comprised of three "zones" so patient, visitors, and staff have the room they need. Modern communication technologies have virtually eliminated overhead paging so patients can rest more easily. Because access to daylight and nature has been proven to enhance the healing process, the new building has been designed to incorporate plenty of both. And the hospital is filled with beautiful art that's been curated to add to the healing environment.

Built-in Safety and Efficiency

The Oak Pavilion is designed to enhance patient safety and promote best practices in infection control. Easy-to-clean materials are used throughout hospital interiors, and all private adult rooms can be converted into positive pressure rooms. The Oak Pavilion also has separate hallways and elevators, not only for infection control but also to reduce traffic in public areas, and protect patient privacy during transport.

In the interest of preventing falls, patient rooms are equipped with handrails and many have lifts to help patients get in and out of bed safely.

Efficiency is enhanced by strategically locating key departments next to each other to expedite care. For example, Emergency & Trauma is adjacent to Imaging & Radiology for faster diagnostic access for trauma patients. Surgery, interventional radiology, electrophysiology, and the cardiac catheterization lab are grouped together on one floor.

A Foundation for a Flexible Future

Flexibility is built into the Oak Pavilion's modular design, allowing for services to be modified as community needs evolve. The Pavilion's interior is based on a grid format to allow for modifications. For example, a space designated as a 28-bed medical/surgery area can easily be repurposed to house two 10-bed ICUs. As medical technology advances, our new hospital's flexible infrastructure allows us to easily incorporate new technologies as they develop.

Green and Sustainable

Respect for the environment is in our DNA. We planned our new hospital with the goal of earning a coveted LEED healthcare designation, notoriously difficult for a hospital to achieve. Wherever possible, we paid close attention to detail, selecting low-emitting, environmentally friendly materials, adhesives, sealants, paint, and flooring. The Oak Pavilion is designed to use 51% less energy than the Cedar Pavilion. We have increased our energy performance beyond the standard for hospitals. We capture and treat stormwater runoff to decrease pollution and avoid disrupting the natural flow of water through the environment. We are also mindful about saving water, choosing drought-resistant plants for gardens to limit the use of potable water for irrigation.

"This state-of-the-art facility combines the natural beauty of Marin with advanced technology to better empower our clinical teams to deliver the best possible individualized care to our patients in a truly healing environment."



Karin Shavelson, MD
Chief Medical Officer, MarinHealth Medical Center

A Special Thanks TO OUR EXPERT PARTNERS



VERTRAN ASSOCIATES



RUTHERFORD + CHEKENE
Structural | Geotechnical



Oak Pavilion Floor-by-Floor

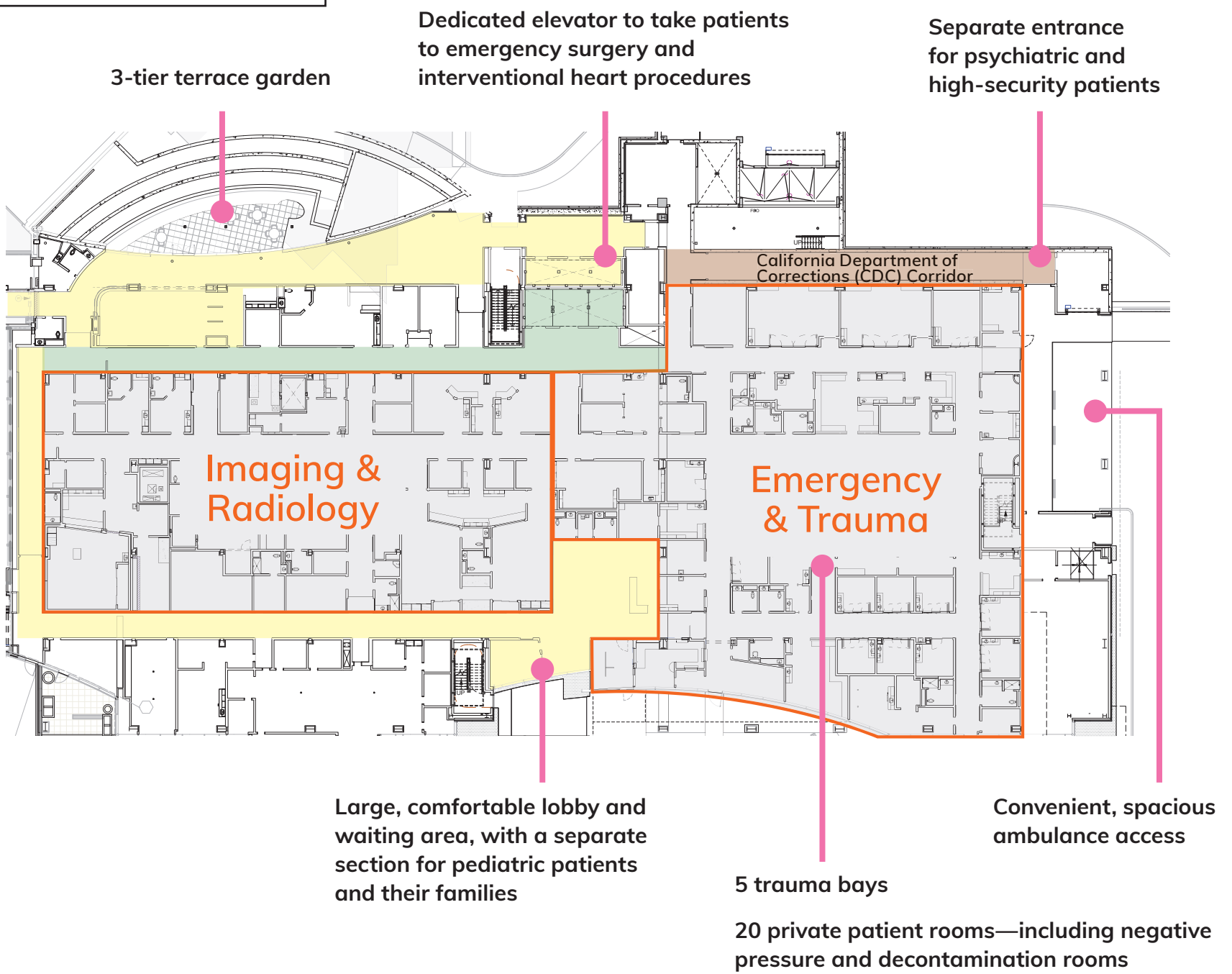
Lobby Level

Imaging & Radiology / Emergency & Trauma

- On-Stage (Public/Visitors)
- Off-Stage (Staff)

For added patient privacy during transport and more efficient access, the building design incorporates separate hallways for staff and patients vs. the public/visitors.

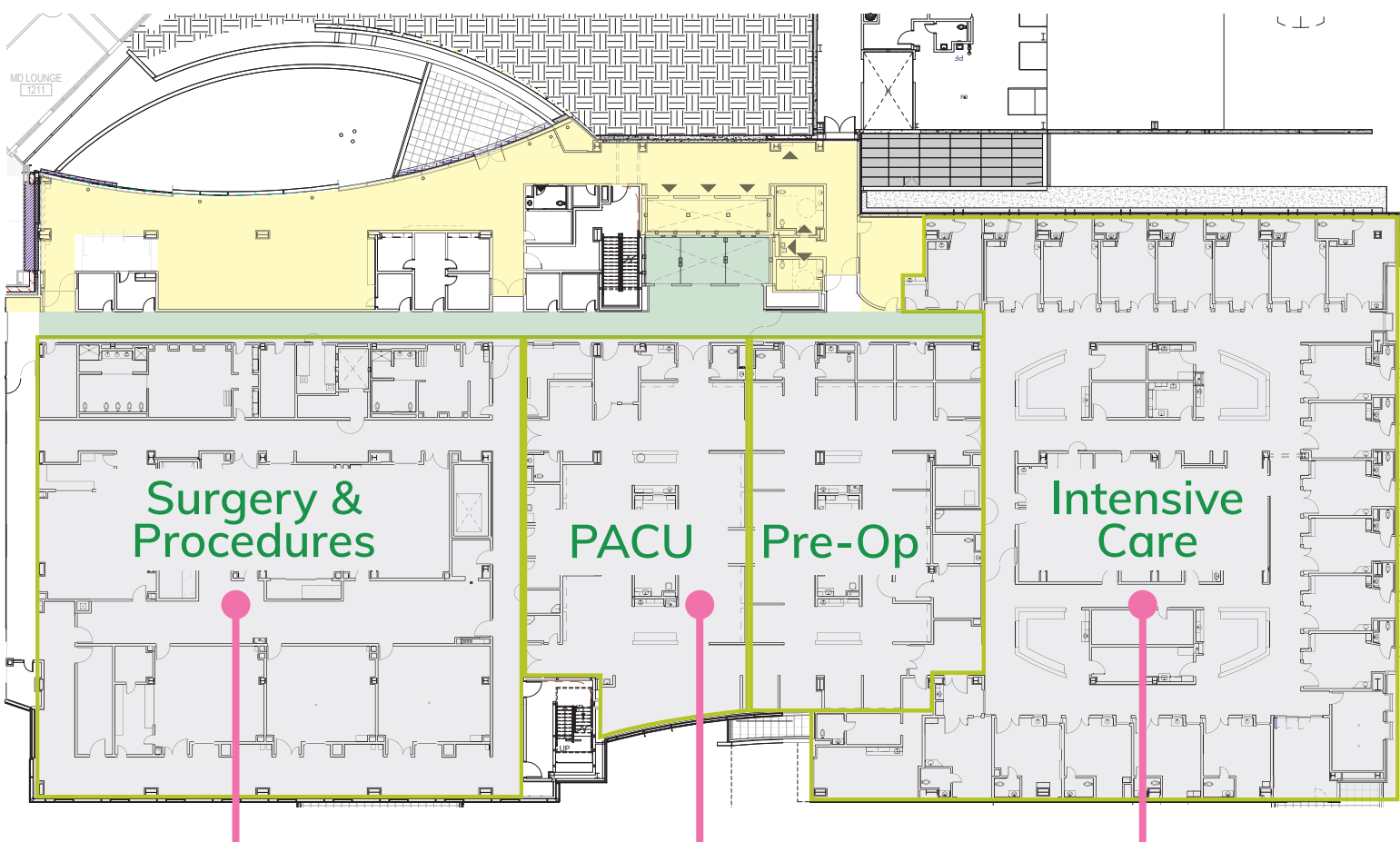
As a Level III Trauma Center, we are fully equipped to treat emergent issues, 24/7. We are an accredited Chest Pain Center and STEMI Receiving Center. This means we have the capabilities and facilities to treat a patient suffering from a heart attack with urgent intervention. Our Stroke Center is staffed and experts in treating all three types of stroke. The new Emergency Department (ED) features larger treatment rooms and more overall space.



Level 1

Surgery & Procedures / Intensive Care

We offer the full complement of surgical care, from minimally invasive techniques such as laparoscopy, interventional radiology, or robotic-assisted surgery, to traditional open surgery. As a Level III Trauma Center, we have an operating room and dedicated surgical team on call, 24/7, for emergency trauma surgery.



2 permanent airborne isolation rooms

3 large operating rooms to accommodate sophisticated equipment for open and minimally invasive procedures

Specially equipped Heart Operating Room

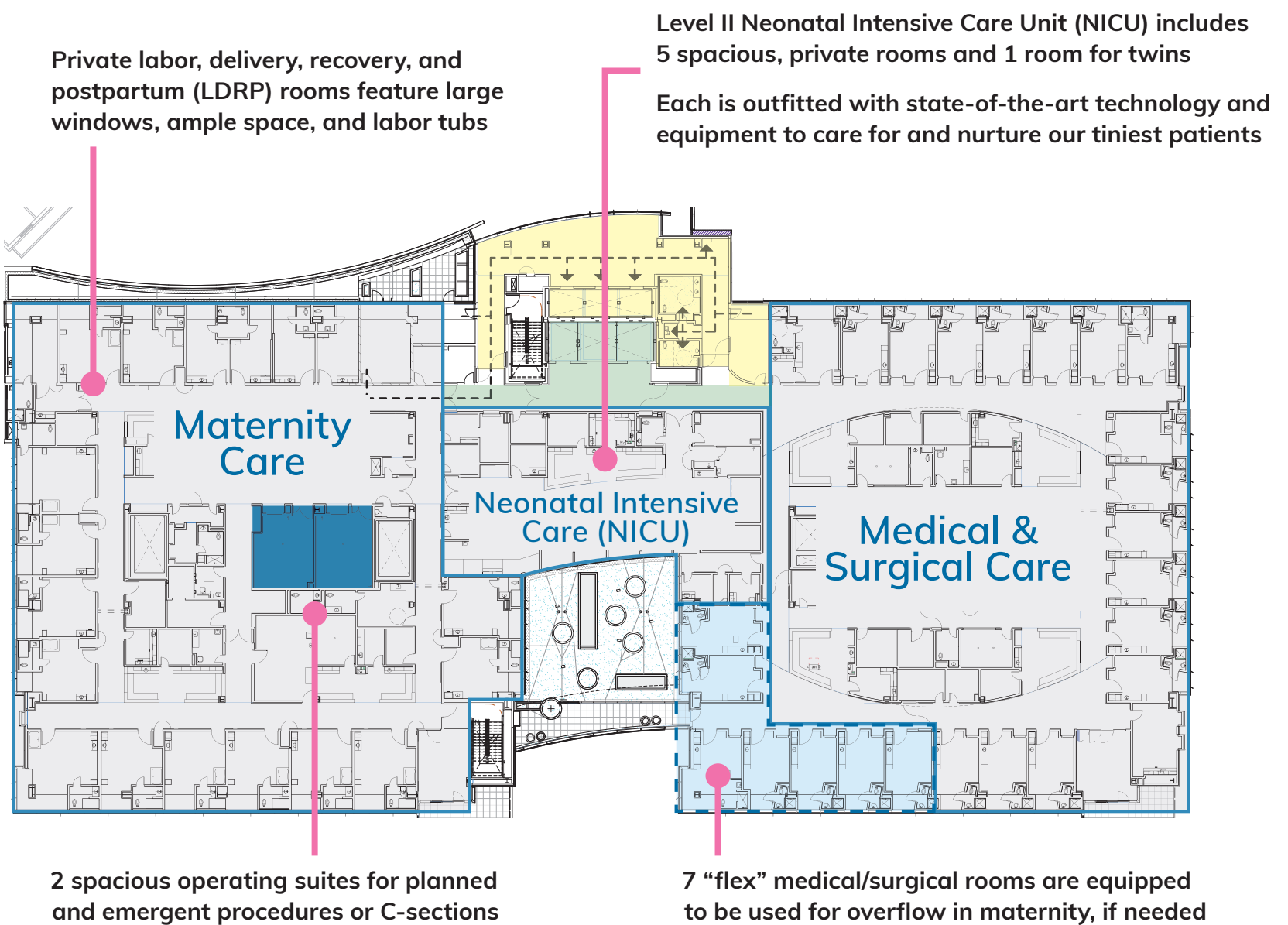
Post Anesthesia Care Unit for recovery after surgery

19 private ICU rooms

Level 3

Maternity Care / Medical & Surgical Care

The third floor of the Oak Pavilion is home to Maternity Care and our Neonatal Intensive Care Unit (NICU), as well as patient rooms dedicated to caring for medical/surgical patients. Our luxurious new maternity suites are state-of-the-art and specially designed to enhance safety, security, and comfort. MarinHealth Medical Center is one of the few hospitals in Marin and San Francisco Counties to offer women the choice of an OB/GYN or, where appropriate, a midwife-assisted birth. OB/GYNs and midwives are on site, 24/7, and neonatologists are available through our partnership with UCSF Benioff Children's Hospital.



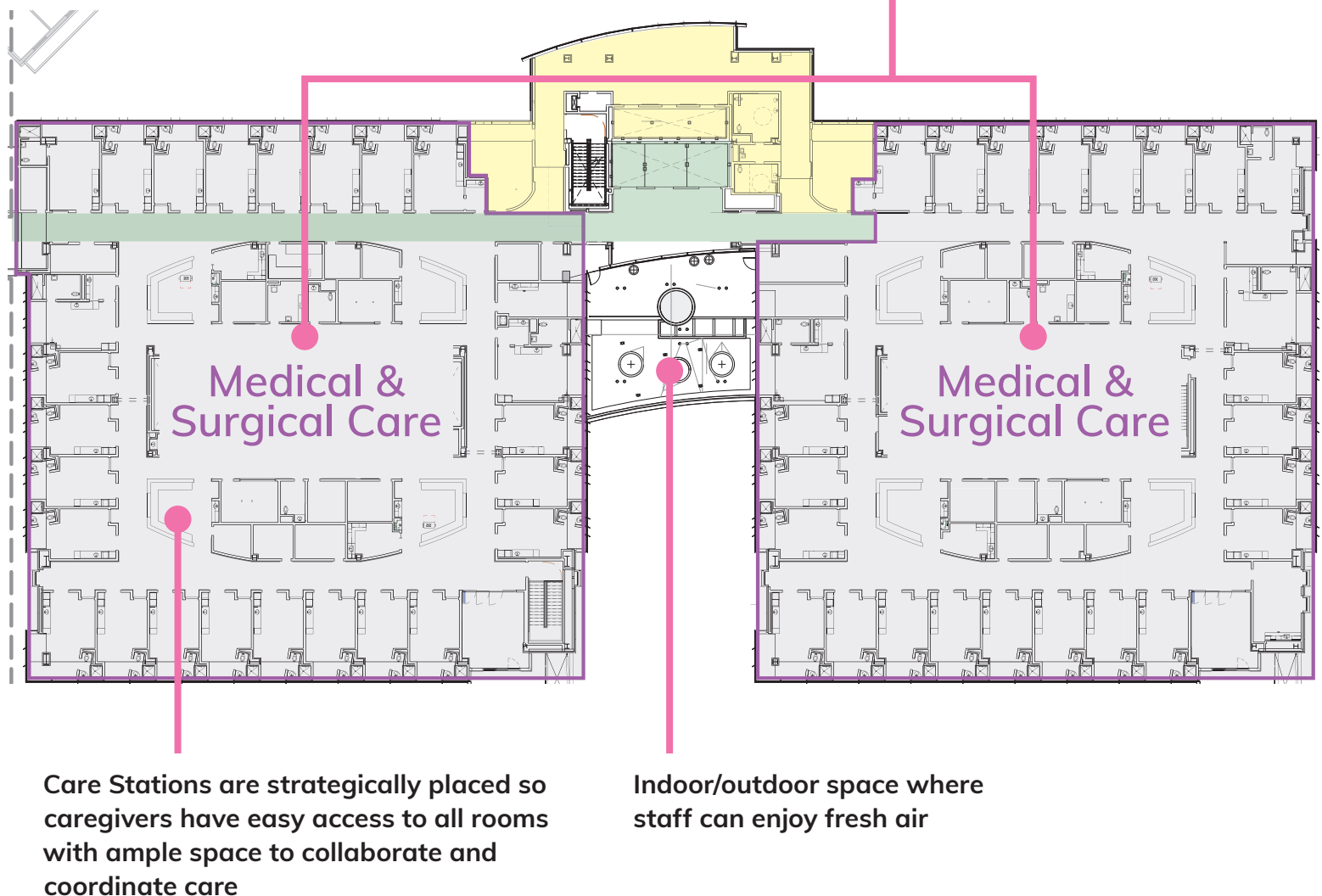
Level 4

Medical & Surgical Care / Patient Rooms

Research has shown that nature and natural light elevate moods and enhance healing. That's why our patient rooms have generous windows with views of greenery and a comfortable space for visitors to stay the night.

114 new private patient rooms

Patient rooms are designed with "zones" to provide ample space for patients, visitors, and caregivers to move comfortably





High-tech, adjustable birthing bed

Private bath with spa shower

Huge windows provide natural light

Foldout couch for partner/coach



“Now we have the facilities, program, and technology to offer women everything they need to have the personalized birth experience they choose.”

Anne Lupus
Director of Maternity Care
MarinHealth Medical Center

Our well-appointed maternity suites make every birth a special delivery.

Modernizing Maternity Care

As the only comprehensive maternity care program in Marin, it's our responsibility to ensure the best possible delivery experience for both mother and child. Our updated program and facilities are specially designed to enhance every aspect of the birthing experience. Technologically, the program is state-of-the-art, from wireless fetal monitoring that allows women in labor to walk around unencumbered, to our infant protection system that electronically connects mothers and babies to ensure the security of newborns.

Our 15 spacious new labor, delivery, recovery, and postpartum (LDRP) rooms allow women to remain in one place, without disruption, throughout their stay. Each room is equipped with a high-tech adjustable bed, refrigerator, rocking chair, TV, and a foldout couch for a woman's spouse, partner, or labor coach. The rooms have views of nature and plenty of natural light. All feature beautifully appointed, private bathrooms and large labor tubs. Each room has a warming table to keep babies comfortable if they need additional support after birth. Should the need arise for a cesarean section, we have two dedicated, fully equipped operating rooms with surgical teams always at the ready.



Every LDRP room has a labor tub.

Our new Neonatal Intensive Care Unit (NICU) includes five private rooms and one room for twins. Each features an array of the most advanced technologies to meet the special needs of preemies and sick newborns, including isolettes, ventilators, intravenous pumps, radiant warmers, and pulse oximeters.



Big reasons to have your little ones with us

- Birth preference plan to have your baby, your way
- For high-risk pregnancies, our OB/GYNs collaborate with UCSF Health perinatologists to provide advanced prenatal testing and monitoring
- OB/GYNs and midwives on site 24/7
- UCSF Benioff Children's Hospital neonatologists and perinatologists on call 24/7
- One of the Bay Area's lowest cesarean rates
- Rate of successful vaginal births after cesareans (VBAC) 3x the national average
- 99% of our new moms choose to breastfeed
- Baby-Friendly® designation for providing an optimal level of care to promoting breastfeeding
- Wide variety of pain relief options, including TENS

A First-class Emergency Department—Ready for Anything



Jason Ruben, MD

The Emergency Department (ED) & Trauma Center at MarinHealth Medical Center is an essential community resource, offering comprehensive services, including lifesaving care for major injuries, emergency spine and brain surgery, and award-winning care for heart attack and stroke. Our new ED & Trauma Center enables us to triage a greater number of patients, more quickly, safely, and comfortably.

The ED has tripled in size and offers easier ambulance access. It is located directly adjacent to surgery and imaging, expediting the care of ill or injured patients. To ensure patient safety and privacy, there are separate entrances and treatment areas for trauma, psychiatric, and high-security patients. The new ED encompasses five trauma bays and 20 private patient rooms, including negative pressure and decontamination rooms. Rooms are designed to provide visual, auditory, and olfactory isolation for maximum patient privacy. Patients in need of surgery or interventional heart procedures can easily be moved to those departments, located directly above the ED, through a special private elevator.

The needs of our littlest patients are built into the new ED, which is equipped for all types of pediatric emergencies. We have a separate Advanced Pediatric Receiving Center and a designated family waiting area. As a certified “Ouchless” ED, the Emergency Department staff communicates with youngsters in an age-appropriate way and delivers care using techniques like virtual reality distraction technologies to capture young patients' attention and help them relax.

“My goal is for everyone to understand that our doctors are experts, truly top-notch across the board. Now, with the new hospital, our facilities reflect that same level of excellence.”

Jason Ruben, MD
Medical Director for Emergency Services
MarinHealth Medical Center

Your Local Resource for Critical Services

- Level III Trauma Center staffed by an experienced multidisciplinary team of trauma specialists
- Certified Primary Stroke Center that can treat all kinds of stroke
- A specialized Spine & Brain Program in collaboration with UCSF Health's Department of Neurosurgery, staffed with expert surgical specialists



This computerized tomography (CT) scanner is just one of the advanced imaging technologies in the new building.

Equipped for Technology Today— and Tomorrow

Technologically, everything about the new Oak Pavilion is state-of-the-art, from the structure of the building to the content within in it. We have an incredibly robust IT infrastructure, both wired and wireless. The building's flexible design allows for housing the latest equipment and easily incorporating upgrades as medical science advances.

Surgery & Procedures

Our new multi-use surgical suites have space to accommodate the latest advanced technologies so our experts can perform surgery or interventional procedures like electrophysiology, cardiac catheterization, and interventional radiology. Equipment is attached to the ceiling with booms, so the suites can be quickly reconfigured for all types of procedures.

We have two operating rooms outfitted for robotic-assisted procedures with the state-of-the-art da Vinci® Xi™ surgical robot. Minimally invasive cardiovascular and electrophysiology procedures take place in a specially equipped room where a sophisticated biplane machine provides experts real-time multi views of the heart as they perform complex procedures.

Communication Features

Overhead paging, an annoyance for patients and visitors, has been virtually eliminated through the use of handheld communication devices for medical personnel. If a patient needs help when a nurse isn't in the room, the electronic call system routes messages to the nurse anywhere in the hospital. Special e-ICU technology allows patients in intensive care to communicate with their providers virtually when

needed. Each patient room is equipped with a 55" HD television that also enables instantaneous, two-way video communication with remote caregivers through a cutting-edge virtual care system.

Imaging & Radiology

Our new imaging equipment is best-in-class. We have the latest generation 256-slice and 64-slice CT scanners and the only Philips Ingenuia 3Tesla (T) MRI in the region, for exceptionally accurate and detailed imaging.

All the new radiology rooms have the same advanced technology, enabling radiologists to immediately diagnose stroke patients who need a clot-busting tPA treatment.

Patient Protection

Most patient rooms, including all the rooms in the new ICU, are equipped with lifts to safely move patients on and off the bed. Hospital rooms are typically under positive pressure. With a touch of a button, every room in the Oak Pavilion can be converted to a negative pressure environment for highly infectious patients, ensuring that airborne pathogens won't spread into other areas. Our virtual care fall prevention technology allows for at-risk patients to be monitored so that help can be summoned when needed. Newborns are protected by the Hugs® Infant Tracking System, electronic wrist bands that connect mother and child and make it impossible for a newborn to be removed from Maternity Care without the system alerting hospital staff.



“We’ve enhanced and streamlined communication so team members can work more efficiently and patients can talk by video to their caregivers, when needed. These tools put information into the hands of the caregivers, which better enables collaboration among the care teams.”

Russ Peckenpaugh

Vice President of Information Services, MarinHealth Medical Center

Patient lifts are just one of many safety features in most rooms

Each spacious private room has a bathroom

Huge windows provide natural light

Ample space for visitors, and room for caregivers to have easy patient access



“You know, hospital and hospitality have the same root word. Our patients are more than people in need of medical care. They are valued guests. Our new patient rooms are comfortable and welcoming for patients, visitors, and clinicians.”

Karin Reese, MS, RN
Chief Nursing Officer &
Chief Administrative Officer
MarinHealth Medical Center

MarinHealth Medical Center: A Hospital of, by, and for the Community

Marin General Hospital, now MarinHealth Medical Center, has been a mainstay of North Bay healthcare ever since our founding as a community hospital by the Marin Healthcare District, back in 1952. By 2010, it had become abundantly clear that we needed to build a new hospital in order to best serve our growing community and fulfill the requirements of California's stringent new seismic mandates. Job one, of course, was finding the funds. We were able to meet our goal of more than \$500 million through a combination of community support via a general obligation bond, the boundless generosity of our donors, and loans. We are proud to take care of this community, and so very grateful that our community takes such good care of our hospital.

Fast-Forward with Measure F

In 2013, the Marin Healthcare District Board of Directors placed Measure F on the Marin County ballot. The measure called for \$394 million in bonds to finance the construction of a new, seismically safe Marin General Hospital building and modernize existing facilities. The Board's most pressing goal was to ensure that Marin County's trauma center would meet California's strict new seismic standards so the hospital could stay open in the aftermath of a major earthquake. The 60-year-old facility had to be disaster-ready, not just for quake-related injuries but also for everyday emergencies like heart attack and stroke.



Two other major factors helped determine the amount of money requested. The Board understood that a state-of-the-art hospital would greatly enhance Marin's ability to attract the most dynamic and accomplished physicians. In addition, they wanted the hospital to reflect the community's love of nature and respect for the environment. That meant building a green hospital designed to meet LEED (Leadership in Energy and Environmental Design) standards. Voters rose to the occasion and the ballot measure passed overwhelmingly.

As inspiring as it was to see the community come together to fund our new hospital, we were still millions short of our target. We moved forward nonetheless, hoping to make up the difference through loans and philanthropy.

Our Community Came Through!

In order to raise funds to build a healing place worthy of our community, the Marin General Hospital Foundation (now MarinHealth Foundation) launched the **Building Better Health Capital Campaign**. Historically, our donors have been exceptionally generous, but this campaign surpassed our greatest expectations. We have been blessed with contributions of all sizes, including several in the millions of dollars. We also received hundreds of smaller donations that added up to make a huge difference. Our donors included major philanthropists, community leaders, physicians, and grateful patients and their families. We also received generous support from our internal team. We launched the **We're All In** employee campaign and were touched to see many of our employees contribute their own hard-earned dollars. We needed the community's support and they delivered!



We are so grateful and proud of this wonderful community for opening your hearts to benefit the health of the North Bay. Thanks to your generosity, we have realized our vision for Marin's Healing Place. We look forward to serving you well for decades to come.

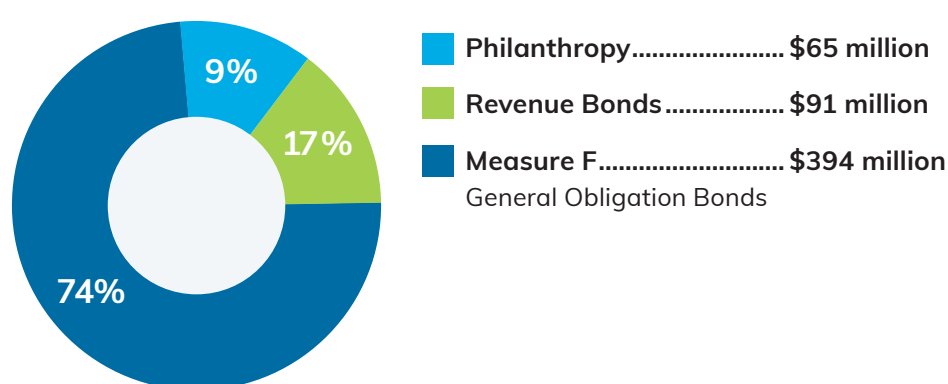
See a list of all the Capital Campaign donors who helped make the project possible, visit www.MarinHealthEvents.org/donors

"We couldn't have built this incredible facility without the generous, philanthropic support of our community. Our donors didn't just give, many of them gave the biggest gift of their lives to help make this possible. We couldn't be more grateful for the investment these families made in this new hospital and, ultimately, in the quality of healthcare we can now provide for generations to come."



Liz Kolcun
President & Chief Development Officer, MarinHealth Foundation

TOTAL PROJECT COST: \$550 MILLION



Our History at a Glance

- 1950 Hospital groundbreaking on Bon Air Hill.

- 1952 Marin General Hospital (now MarinHealth Medical Center) opens as a four-story, 104-bed acute-care facility.

- 1963 116-bed addition opens, including a recovery room, intensive care unit, 12-bed heart unit, and a cobalt cancer treatment unit.

- 1965 Formation of the Marin General Hospital Foundation, now MarinHealth Foundation.

- 1968 Community Mental Health Center opens.

- 1986 West Wing adds 78 beds to the hospital.

- 1996 Marin General Hospital becomes part of Sutter Health.

- 2010 The hospital is successfully transferred back to local control and independence. Prima Medical Foundation, now part of MarinHealth Medical Network, is formed to enhance care and recruit new physicians.

- 2011 Creation of the Center for Integrative Health & Wellness (now MarinHealth Integrative Wellness Center).

- 2012 Renovation and expansion of the Emergency Department. Trauma Center receives a 10-year county contract.

- 2013 Braden Diabetes Center, a comprehensive outpatient diabetes education program opens. New affiliation with UCSF Benioff Children's Hospital provides enhanced neonatal care on site. Measure F passes, the general obligation bond to rebuild Marin General Hospital.

- 2016 Staff parking garage opens. Groundbreaking ceremony for the construction of the new hospital building.

- 2017 "Topping Off" ceremony for placement of the last piece of structural steel for the building.

- 2018 Launch of an expanded Strategic Alliance with UCSF Health.

- 2019 MarinHealth Medical Center (formerly Marin General Hospital), MarinHealth Medical Network, (formerly Prima Medical Foundation), and MarinHealth Foundation, (formerly Marin General Hospital Foundation), join forces to form the comprehensive, integrated, healthcare enterprise now known as MarinHealth.

- 2020 New hospital building (Oak Pavilion) opens. The Central/East Wing is renamed Redwood Pavilion. Behavioral Health is renamed Cypress Pavilion. West Wing is renamed Cedar Pavilion.